

FAQ (Frequently Ask Questions)

Budo Dojo On-Line Payment System

Contents:

- [How do I find the On-Line Payment Page?](#)
- [New Dojo Members Registering](#)
- [What *Current* payment options are available?](#)
- [What Future payment options are expected?](#)
- [What new Menu and Widgets Icons that you should you notice and what do they do?](#)
- [What's in the Member Profile Page?](#)
- [How do each of the payment's options work?](#)
- [What should you expect?](#)
- [Additional questions?](#)



How to find the On-Line Payment Page

The Budo Dojo On-Line payment page is under the [Fees and Policies](#) menu tab. You can go directly to his page by clicking on [this link](#).

New Dojo Members Registering

New dojo members need to select both **Budo Dojo Monthly Membership** and **Annual ASU Membership (Whitebelt)** to fully register as new students. Also, remember to complete the [Registration / Liability Waiver](#) form.



Current Payment Options

The Budo Dojo website now provides an On-Line payment page allowing new or current students to pay for various services including;

- **Budo Dojo Monthly Membership:** This covers the recurring \$95 monthly dojo membership
- **Annual ASU Membership (Whitebelt):** This covers ASU association membership which includes certificates and
 - testing accreditation through ASU for mudansh (whitebelts).
- **Annual ASU Membership (Blackbelt):** This covers ASU association membership which includes certificates and
 - testing accreditation through ASU for yudansha (blackbelts).
- **Drop-in Mat Fee:** Aikido students visiting from other dojos may choose to pay a drop-in fee for training in a single class.
- **Past Months Dues:** For students who may need or want to pay for dojo membership for months in the past resulting from
 - delays in getting our On-line payment solution up and running during this busy start-up period.
- **Budo Dojo Donations:** Voluntary financial donations help offset the expenses of running the dojo, especially during this
 - startup period of higher-than-normal expenses with lower-than-normal membership support.

Future Payment Options

We expect to add some additional payment options in the *near* future including;

- **Mudansh (whitebelt grades) Testing:** Fees to cover testing and certification.
- **Seminar Payments:** Pay on-line for seminars with visiting instructors.

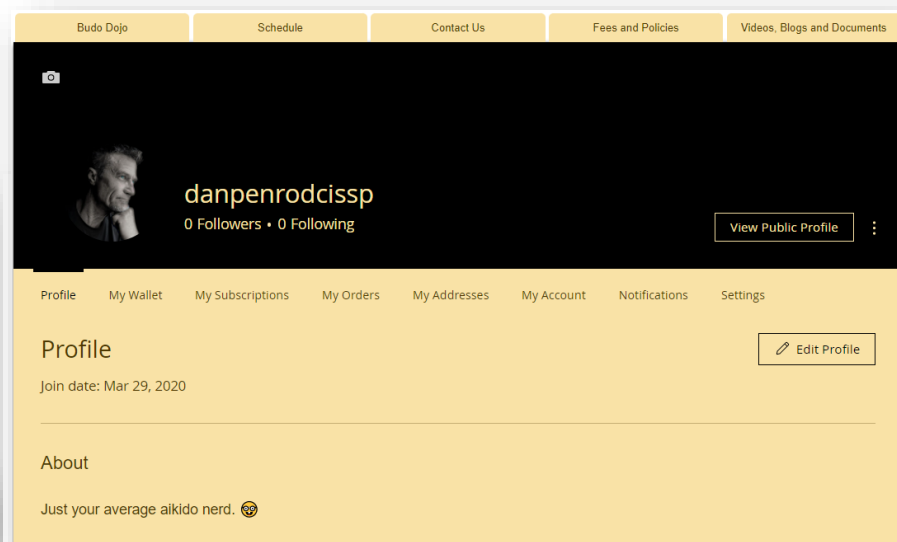
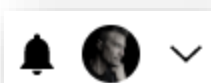
Menu and Widget Icons in Website Header

1. **[Fees and Policies](#)**: The **Fees and Polices** tab takes you to our on-line payment page.
2. **Shopping Cart**: This icon widget tells you if you have items in the shopping cart, the number of items, and it will take you to the **Shopping Cart** page for checkout. It's easy to overlook.
3. **Log in**: This icon widget allows you to log into the site as a member. Logging in is useful for payments as well as access to member forums, blogs and other features we'll outline below. Once you've logged in the head icon will change to your profile picture if you've uploaded one while creating your profile. The bell icon takes you to your profile page and show notifications. The drop-down arrow takes you to a specific menu option of your profile page.

Member Profile Page

You'll be prompted to create a Member Profile the first time you set up your monthly payments. The **Member Profile Page** has several sub-pages regarding your profile. You can edit all the things in this profile including visibility.

- **Profile**: Contains when you joined this profile and a brief About description you may provide.
- **My Wallet**: Shows your current



payment options of credit cards including Default Card.

- **My Subscriptions:** Shows group memberships tied to member forums based on membership payment.
- **My Orders:** This page won't have anything useful. W
- **My Addresses:** This will show your contact information including address and phone number if you provide it.
- **My Account:** Displays your account name, first name, last name, email address and phone number.
- **Notifications:** Notifications will notify you if members have sent you or the community messages.
- **Settings:** Options for being notified by multiple events.

How do Payment Options Work in the Online Payment page?

Budo Dojo Monthly Payments: When you click on the Budo Dojo Monthly Payments option you will be taken to the checkout page for this selection with a few options.

Quantity: Generally, this should be “1” if you’re setting up your monthly membership. You might select a quantity greater than 1 if you choose to set up payment for multiple family members and get charged for all family members as a single charge. For example, if you’re setting up a recurring dojo membership for you and your wife you could select “2” and be charged \$190 a month as a single charge.

Price Options: Currently there is only one Price Option. You still must select the radio button even though you forget you will be prompted. 😊

Subscribe Now: Once you’ve selected **Quantity** and the **membership** radio-button click the **Subscribe Now** button to go to the Checkout. If you want to select other payment options in addition to this you can select Continue Shopping to see other options. Or you can complete the payment options and click on Place Order to complete your purchase.

Annual ASU Membership :: Whitebelt / Blackbelt: This option allows us to pay our annual **ASU** membership dues. All ASU members also need to be members of ASU (Aikido Schools of Ueshiba). This affiliates us with ASU, under the guidance of Mitsugi Saotome Shihan, and provides our testing certificates and accreditation.

Annual Mudansha (whitebelts / All ranks below blackbelt) membership is currently **\$50**.

Annual Yudansha (blackbelt / All ranks of blackbelt) membership is currently **\$75**.

ASU membership is due annually, usually at the beginning of each calendar year. You may be reminded by email. ASU dues must be submitted in the following year.

- **If you are paying this fee in the beginning of the calendar year (January)** you *may* choose the **Annual** option. Your annual payments are submitted automatically. You would only need to do this once. Alternatively, you can choose **One-time purchase** if you prefer, in which case you will need to remember to set up this payment each year as long as you're a member.
- **If you're paying this fee mid-year** you should choose the **One-Time Purchase** option. This would be a one-time annual payment, the following year, in January.
- ***Note:** New members joining after the end of July must still pay the annual ASU membership, however, it will be credited to the following calendar year.

Memberships may be cancelled at any time by logging into your profile, finding the subscription and selecting the Cancel option. The Cancel option opts you out of *future* payments, not payments already made.

Drop-In Mat Fee: The Drop-In Mat Fee is for aikido students visiting from other dojos who would like to train in our classes during their visit.

This option is not intended as an alternative to dojo membership for continuing students planning to train regularly. In mat fees do not cover the costs of dojo membership. Students who want to train with us regularly, as expected, should subscribe to the regular **Budo Dojo Monthly Payments**. The Drop-In Mat Fee is simply a convenient alternative for regular members.

If you are visiting for a single class, select **Quantity 1** and then **[Buy Now]**. If you plan to train in several classes during your visit, you can choose a **Quantity** for any number of classes you'd like to attend. Then select the **[Buy Now]** button. The **[Buy Now]** button will add this purchase to the **Shopping Cart**, however, more than likely you're done with your purchase. You want to choose **[Buy Now]** and proceed to **Checkout**.

Pay for Previous Months: As we were reopening our dojo, it took several months to build the On-Line Payment system. Students who didn't have a convenient way to set up their monthly membership payments so their monthly dues may have been in arrears for a few months as a curtesy. Students can now pay for past, unpaid, months by choosing this option to bring their membership current.

You can choose the **Quantity** for the number of past months you'd like to pay, and select the **One-time purchase** option. **[Buy Now]** to pay \$95 x Quantity, all at once.

Alternatively, we offer options for students to choose to spread out past payments over several months.

Other possible option examples...

- If you select **Quantity 1** and **Past Monthly Dues (x4)** (for example), you will be charged \$95 / month for 4 months.
- If you were to select **Quantity 2** and **Past Monthly Dues (x2)** (for example), your payment plan would be for 2 months, but you would be charged (\$95 x 2) \$190 over 2 months.

- If you owed for 6 months you could choose a one-time option to pay in full, immediately, or pay \$99 a month for 6 months, or 2 payments a month for 3 months, or 3 payments a month for 2 months.

Hopefully these alternative past-payment options make sense to everyone and you find the options useful. If you're still confused, please reach out to us for clarification.

Budo Dojo Donations: Re-Opening a dojo and starting all over again, from scratch, especially during a pandemic is expensive and financially challenging. As we are struggling to get students back to the same time we're incurring many start-up costs. If you'd like to help us meet our goals as we rebuild, our donations are humbly and gratefully accepted.

Much like the **Pay for Previous Months** option... you have multiple payment choices to can choose from.

You can simply pick any quantity of \$25 donations, choose **One-Time purchase**, and **[Buy Now]** for a one-time donation of Quantity x \$25.

Alternatively, you can combine any quantity over any number of months, up to 6 months.

Thank you for considering a donation to Budo Dojo.

What should you expect?

- When you select a **One-time purchase** option (radio button) you are provided with an **[Add to Cart]** button, your **Shopping Cart** is incremented, and you are prompted to **View Cart** before **Checkout**.
 - The **Shopping Cart** page has the **Checkout** button to go to final checkout.
 - If you select the **[Buy Now]** button it will bypass the **Shopping Cart** and take you directly to **Checkout**.
- When you select a **Subscription** membership (aka Recurring Fee) you are provided with a **[Subscribe Now]** button and you will be taken directly to the **CHECKOUT** page rather than the shopping cart.
- Because of the shopping cart behavior, you may be required to make 2 separate purchases... for example, once for the **Budo Dojo Monthly**

Payments ... then CHECKOUT... and then Annual ASU Membership... then CHECKOUT.

Additional Questions?

If you have additional questions send us an email message on the [Contact Us](#) menu option or *call* or *text* us at the phone number on the [Contact Us](#) page.